

EMERALD LAKES PHASE XIII

BEING A REPLAT OF A PORTION OF TRACT 1, EMERALD LAKES AS RECORDED
 IN PLAT BOOK 9, PAGE 22 OF THE PUBLIC RECORDS OF
 MARTIN COUNTY, FLORIDA.
 SECTION 36, TOWNSHIP 38 SOUTH, RANGE 41 EAST

SHEET 3 OF 3

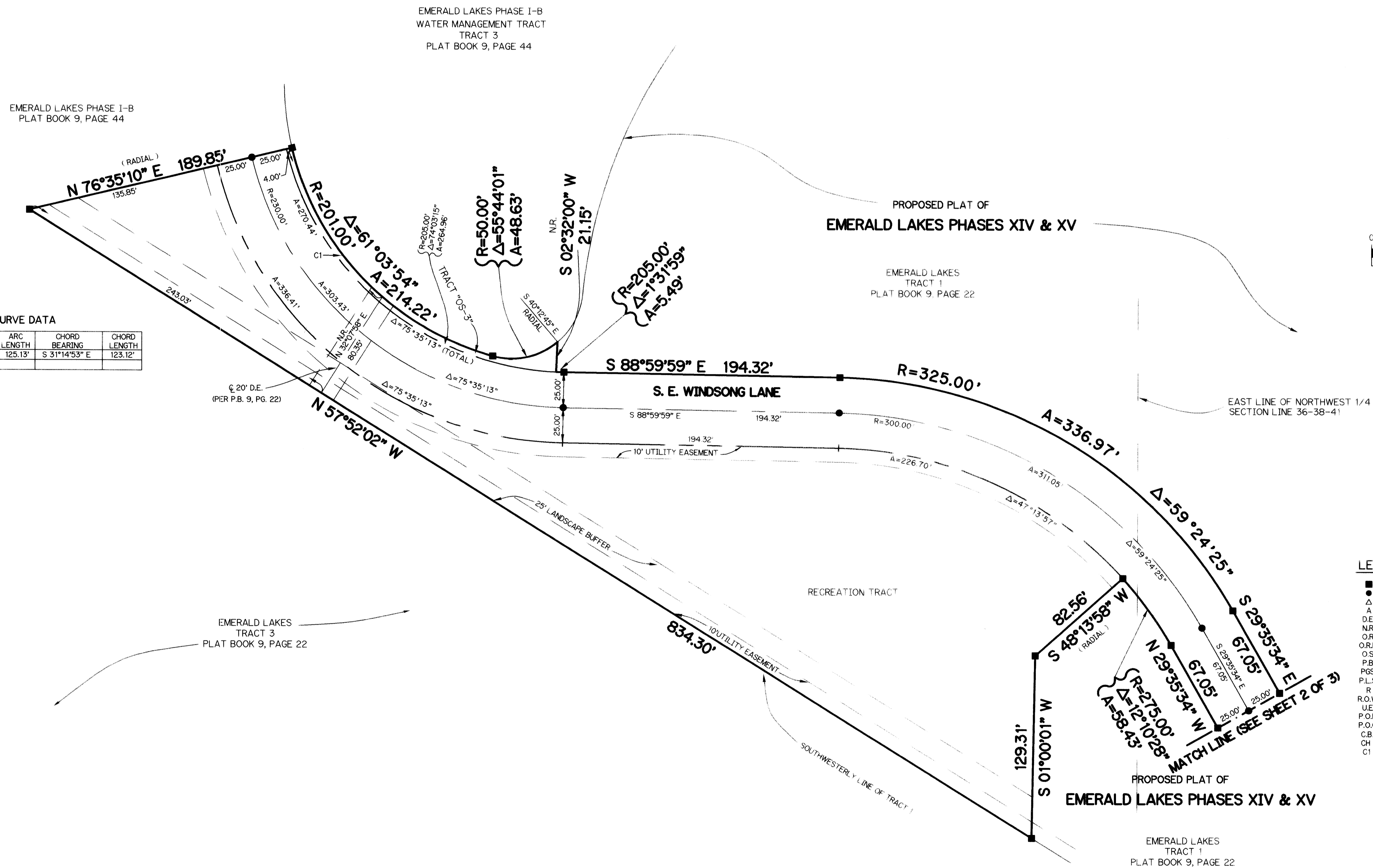
DECEMBER 6, 1994

I, MARSHA STILLER, CLERK OF THE CIRCUIT COURT OF MARTIN COUNTY
 FLORIDA, HEREBY CERTIFY THAT THIS PLAT WAS FILED FOR RECORD IN
 PLAT BOOK 13, PAGE 12, MARTIN COUNTY, FLORIDA, PUBLIC
 RECORDS THIS 12 DAY OF April, 1995

MARSHA STILLER, CLERK
 CIRCUIT COURT
 MARTIN COUNTY, FLORIDA

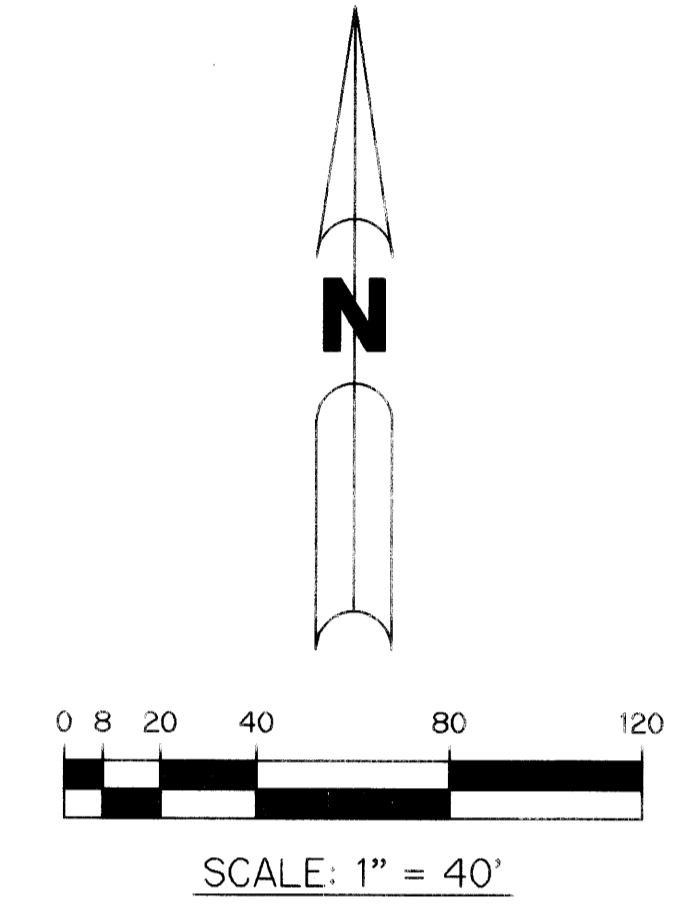
BY: *Deborah Kingston*
 DEPUTY CLERK

FILE NO. 1112530



D.E. TIE CURVE DATA

CURVE NO.	RADIUS	DELTA (Δ)	ARC LENGTH	CHORD BEARING	CHORD LENGTH
C1	201.00'	35°40'13"	125.13'	S 31°14'53" E	123.12'



- LEGEND:
- - PERMANENT REFERENCE MONUMENT, PLS #4213
 - - PERMANENT CONTROL POINT, PLS #4213
 - Δ - DELTA ANGLE
 - A - ARC LENGTH
 - DE - DRAINAGE EASEMENT
 - NR - NOT RADIAL
 - OR - OFFICIAL RECORD
 - O.R.B. - OFFICIAL RECORD BOOK
 - O.S. - OPEN SPACE
 - P.B. - PLAT BOOK
 - P.G.S. - PAGES
 - P.L.S. - PROFESSIONAL LAND SURVEYOR
 - R - RADIUS
 - R.O.W. - RIGHT-OF-WAY
 - U.E. - UTILITY EASEMENT
 - P.O.B. - POINT OF BEGINNING
 - P.O.C. - POINT OF COMMENCEMENT
 - C.B. - CHORD BEARING
 - CH - CHORD LENGTH
 - C1 - CURVE NUMBER "SEE CURVE TABULATION"

THIS INSTRUMENT PREPARED BY
 PERRY C. WHITE P.L.S. 4213 STATE OF FLORIDA
 LAWSON, NOBLE AND ASSOCIATES, INC.
 ENGINEERS PLANNERS SURVEYORS
 WEST PALM BEACH, FLORIDA